



The Pliers Wrench from **Knipex** is designed to tackle jobs like tightening nuts and bolts, bending, pressing or gripping. As the surface of the jaws is smooth, Knipex boasts that the Pliers Wrench not only grips the work piece firmly and safely, but also allows even plated fittings with polished surfaces to be gripped without damage. In addition, this professional tool is available in five distinct sizes.

Described as offering outstanding technical performance, impressive water and mould resistance, GTEC Aqua Board from **Siniat** is claimed to be the leading innovation in gypsum boards. Launched following extensive testing, it is designed to offer a new dimension in gypsum board solutions for wet environments for both internal and external applications. GTEC Aqua Board is easy to cut, fix and handle, which in turn offers savings in terms of both time and money.

Click Fix, the latest product from **RJW Engineering** — which has previously launched the Pipe Cowl — is designed to stop pipes from leaking. The concept revolves around the idea that, if a nail is put through a pipe, Click Fix provides a simple, permanent fix — negating the need to apply a temporary fix until a larger repair can be carried out.

Something a little different now with the CC inspection camera from **Silverline**. Roger Bisby, professional plumber and PHPT's product tester, said: "With a low price tag of

under £100, I wasn't expecting an awful lot, but it surprised me from the start. It is colour, it records at a very respectable 30 frames per second to a micro SD card and takes still shots. It has an adjustable light and a very skinny snake, which gets you into places other cameras can't go. And you can buy 1m long extension snakes to get you in further.

"The fact that it has a three-year warranty says a lot. The final surprise with this tool is that it has a 3x digital zoom and in that it beats some of those higher priced models."

**Worcester's** CondenseSure auxiliary syphon is designed to be flexible, allowing it to be fitted with any condensing boiler, either at the time of installation or in retrofit. It consists of a syphonic trap and insulation, which connects to the condensate outlet pipe of the boiler and can then be attached to the heating flow pipe of the boiler. As the condensate discharge pipework leaves the boiler, the condensate is collected in the CondenseSure syphon.

The condensate subsequently, discharges automatically in 500ml quantities through the externally run discharge pipework to drain outside. The volume of the condensate discharged, together with the additional free 'parasitic' heat from the boiler flow-pipe, produces the anti-freezing effect.

Lastly, containing four powerful cleaning agents and four dermatologically tested skin conditioners, **Big Wipes** says its 4x4 products have been assessed to the latest EU Regulation 1223/2009 for cosmetic products with zero levels of irritation recorded during controlled testing by dermatologists. The range also offers >99.9% anti-bacterial protection for your skin. Packaged in easy grip, big capacity trade-tough tubs with a quick seal lid, Big Wipes 4x4 comes in three different colour-coded types — Red Top is Heavy Duty; Black Top denotes Multi-Purpose; and Green Top is Multi-Surface.

## PROFESSIONAL HEATING & PLUMBING INSTALLER



For more information on the products and services featured in this article, please circle the appropriate Readerlink number on the enquiry card:

Olympia Tools  
Roughneck Tri Vice  
Circle readerlink 118

Wilco  
High efficiency pump range  
Circle readerlink 119

ForgeFix  
Tile Max drill bit range  
Circle readerlink 120

Dab Pumps  
e.sybox  
Circle readerlink 121

Knipex  
Pliers Wrench  
Circle readerlink 122

Siniat  
GTEC Aqua Board  
Circle readerlink 123

RJW Engineering  
Click Fix  
Circle readerlink 124

Silverline  
CC inspection camera  
Circle readerlink 125

Worcester  
CondenseSure  
Circle readerlink 126

Big Wipes  
4x4 range  
Circle readerlink 127





**PBM reveals the discussion points and some of the most popular products and services from the latest issue of Professional Heating & Plumbing Installer, as selected by the magazine's readership of heating engineers and plumbing sector professionals.**

Just as with Professional Builder magazine, the key feature of PHPI's December edition is the big reveal of the year's 'Top Products'. Largely based on reader feedback through the publication's Readerlink enquiry service, we can now take a look at the year gone by to let merchants consider what have been some of the most popular products and services according to PHPI's legion of trade readers.

First up is the Roughneck Tri Vice. Distributed by **Olympia Tools**, the supplier believes it has answered the challenge of trying to grip items such as large pieces of pipework whilst they're cut, drilled, sanded, sawn, welded or otherwise worked on on-site.

The Tri Vice takes its name from its triangular shape — making it a go anywhere, grab almost anything plate vice. Features include carefully considered apertures that enable Tri Vice to securely grip materials as diverse as conduits, rigid steel pipes, PVC and ABS, as well as copper tubing and many timber sizes.

Next, and **Wilo's** series of high efficiency glandless pumps — Wilo-Yonos PICO, Wilo-Stratos PICO and Wilo-Stratos — is said to be relevant for nearly all applications for heating, air-conditioning and cooling in the building services area, from the family



home to a small commercial or industrial building. A key advantage is perhaps in the company's claim that having such a comprehensive range of products from one source means that installers do not need to undertake a time-consuming search for the most suitable solution for their projects.

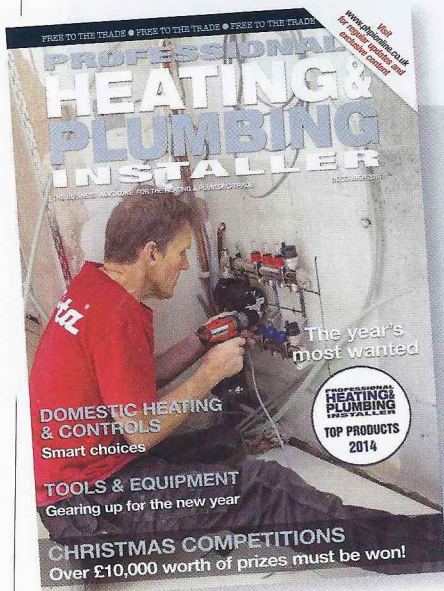
Most recently launched was the baby of the family — the Wilo Yonos-MAXO series. The MAXO range is offered as a cost effective high efficiency option, aimed at solutions where full Building Management System connections are not required. In total, there are nine variations available across PN 10 & PN 6/10.

The TileMax drill bit range from **ForgeFix** has been complemented with a 4mm bit for drilling pilot holes. Said to enjoy all the trademark qualities of its larger counterparts, this includes construction from tungsten carbide — one of the hardest materials known to man — which means that



it can make light work of all tile types, not to mention marble, concrete, engineering brick and even granite. It also benefits from a special asymmetric design and a precision tip. This reduces resistance to the bit by 25% and prevents wandering when drilling commences.

The e.sybox low noise water pressure pump from **Dab Pumps** can be fitted vertically or horizontally, bringing choice and flexibility to installation. It can be plugged directly into the mains electricity supply and, once switched on, the pump automatically commissions. All the tools the installer needs are kept neatly in the lid of the unit, along with a useful QR code that links directly to an online "how to" video. Extremely compact and around 30% smaller than other systems, the e.sybox reaches only 45db at 12 l/min at 3 bar and it can operate at higher flows up to 120 l/min and pressures up to 6 bar.





# PROFESSIONAL BUILDERS MERCHANT

THE No.1 BUSINESS MAGAZINE FOR MERCHANTS

JANUARY 2015



## KITCHENS & BATHROOMS

New product trends and water efficiency

## TRANSPORT, HANDLING & STORAGE

Improving business efficiencies

**Plus: News, business services, sales support, merchandising & display solutions and more.**

[www.professionalbuildersmerchant.co.uk](http://www.professionalbuildersmerchant.co.uk)



**Fantasy  
Football**



**Details on  
page 49**