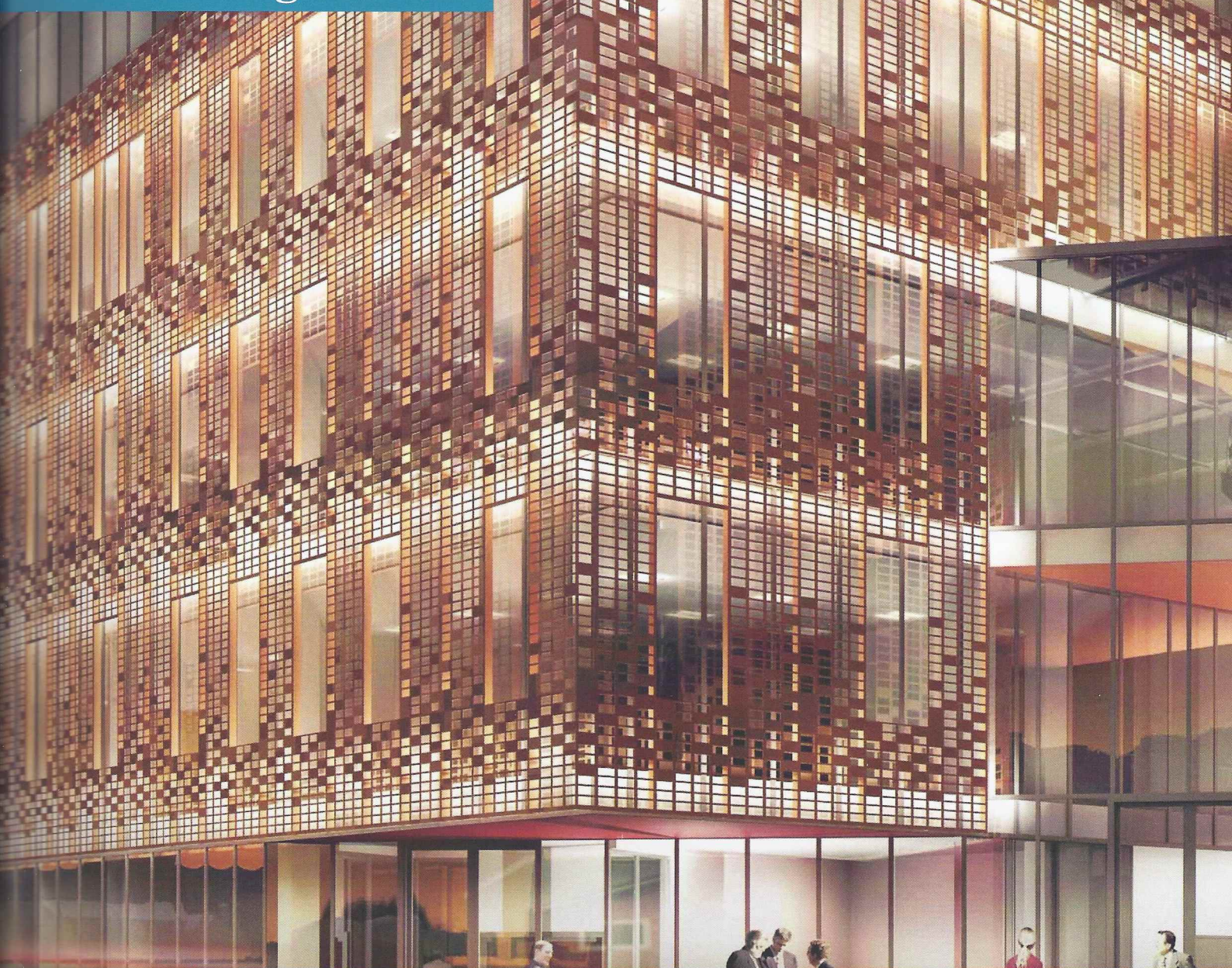


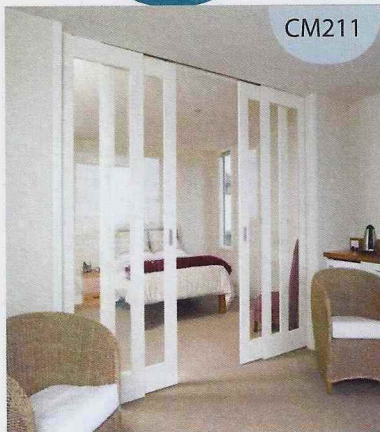
ABC+

IN PARTNERSHIP WITH
www.buildingtalk.com



NEW VISION FOR ROYAL EYE HOSPITAL 47

GLASSOLUTIONS wins glazing design contract for new Citylabs building on the site of the former Royal Eye Hospital in Manchester



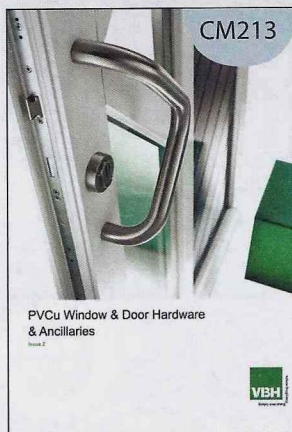
CM211

Zero clearance from Brio

Floor-to-ceiling sliding doors and shutters are becoming more and more popular, providing in-built flexibility for how the space is used. As floor-to-ceiling doors can present challenges when it comes to sliding door hardware, **Brio** has designed and manufactured its Single Run top-hung system with a Zero Clearance option. The Zero Clearance option, available across the Brio Single Run 80 – Single Run 300 product portfolio, successfully achieves the modern minimalist look with hardware discreetly hidden from view. With no hanger plates or screws protruding above the top edge of the door, Single Run Zero Clearance has been designed to achieve clearances of 3mm between the track and the top of the door.

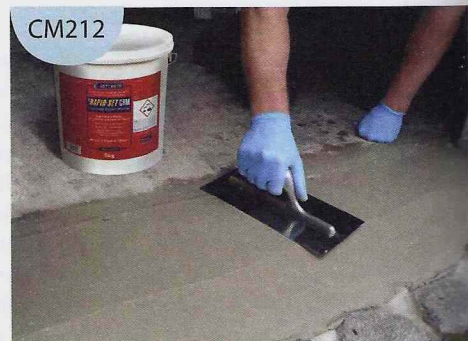
New PVCu catalogue from VBH

VBH has unveiled *Issue 2* of its catalogue of hardware and ancillaries for the manufacture and installation of PVCu windows, doors and patios. Much has changed with VBH's range since the publication of *Issue 1* and, although many stalwart products carry through from that first issue, the majority are new. The company's own greenteQ range has expanded hugely and features heavily with products for all frame types. There is no shortage of branded hardware from VBH's key market partners. New developments such as manual and automatic door locks, door handles, one and three-star profile cylinders, security handles, letterboxes, parallel sliding and bi-fold patio systems, folding openers, security window locks, shootbolts and even cat flaps from well known brands such as Dr. Hahn, Hoppe, Roto, Siegenia, Yale and others all feature.



CM213

PVCu Window & Door Hardware & Ancillaries



CM212

New Rapid Set Concrete Repair Mortar from Setcrete

Setcrete has launched Setcrete Rapid Set Concrete Repair Mortar (CRM) to add to its range of high performance flooring products for the professional builder. The specialist repair mortar, which is suitable for both internal and external repair projects, is easy to use and suitable for repairing damaged and worn concrete, prior to the application of an appropriate Setcrete floor levelling compound or Setcrete Rapid Set DPM. Setcrete Rapid Set CRM can be used for the non-structural repair of lower strength concrete elements such as floor screeds, concrete paving slabs, balcony edges and stair treads, as well as being suitable for producing gradient ramps and for vertical applications.



CM214

The best just got better

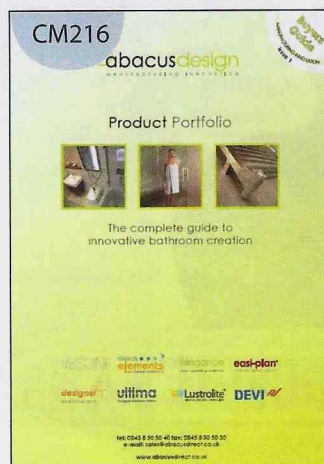
Big Wipes has launched its all new 4x4 range of industrial strength wipes, containing no fewer than four powerful cleaning agents and four dermatologically tested skin conditioners, making Big Wipes 4x4 cleaning wipes even tougher on grime and even kinder to your hands. The benefit of Big Wipes 4x4 is their ability to shift all modern construction sealants, adhesives, paints, coatings and grime in an instant. As they are completely portable, they can be kept close to hand to remove the muck before it gets a chance to fully cure. In order to look after the skin, the formula contains four of the world's greatest skin conditioners: Aloe Vera, Lanolin, Vitamin E and Glycerine.

New Horizons are afoot

Expand your Horizons with **Hudson Reed's** new range of modular furniture. Available in two contemporary finishes: white sawn oak for a clean, minimalist look and mid sawn oak for those who prefer a warmer tone – this versatile furniture range is suitable for the modern bathroom. Manufactured in Britain, with soft-close, double skinned metal box drawers, Horizon offers the quality you would expect from Hudson Reed, coupled with the ability to tailor your bathroom with modular units which can be used to create eight different combinations to suit your needs. There is a choice of basin units with ceramic basins which can be inset for a neat finish or free-standing for contemporary chic.



CM215



CM216

New guide to designing bathrooms

For the first time, the seven brands from **Abacus Direct** are detailed together in a 400-page, A5 *Complete guide to professional and innovative bathroom creation* which has been designed to give the designer, retailer and installer all they need to create the perfect space. Easy to carry and navigate, the guide details Vessini – sanitaryware, brassware, wetrooms, baths, furniture; elegance – towel warmers and radiators; easi-plan – sanitary fixing systems; elements – wetrooms and waterproofing systems; designer bathroom tiles; Lustrolite – glass effect panels for shower walls and splashbacks and ultima – designer valves. In addition, Abacus Direct is a distributor for DEVI and Grundfos. Ian Pattison, Abacus Direct's managing director, explained: "The new guide illustrates just how hard we have worked to devise clever, all-in-one solutions for bathrooms of all shapes and sizes."