



BIG WIPES

Multi-Purpose Bucket

To ensure you'll never run short of Big Wipes Multi-Purpose 4x4, the company has introduced a reusable bucket, containing 300 industrial strength Multi-Purpose wipes. Big Wipes 4x4 Multi-Purpose wipes are made from a three layered, non-woven quilted fabric. This highly absorbent fabric captures liquid between the fibres, minimising the number of cleansing wipes used for any cleaning job. The Power Fabric Technology also results in the wipes being extremely tear resistant, lint-free and super tough – making light work of cleaning up your hands, surfaces and tools after a mucky day out on site.

CIRCLE READERLINK 844

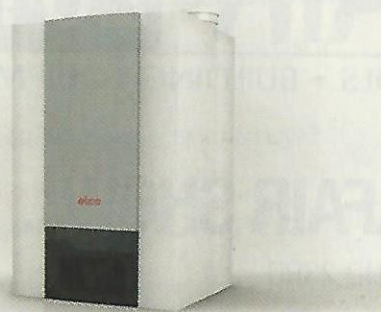


KNIPEX

ErgoStrip

Created to be small, versatile and easy to use, the ErgoStrip is a tool capable of stripping and dismantling all cables used in modern house installations. The angled shape of the ErgoStrip allows it to strip all common NYM cables and the pistol grip means there is no need to change grip when disassembling. It's designed to be ideal for work in confined spaces such as junction boxes and distribution boxes as the tapered tool ends allow for dismantling in cramped areas. With installer needs in mind, Knipex has placed location ridges on the wire stripping holes so that the correct cable position for stripping can be found intuitively – even in the dark.

CIRCLE READERLINK 847



ELCO

THISION L EVO

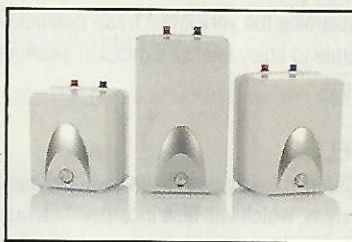
ELCO Heating Solutions has launched the THISION L EVO – a completely re-engineered range of wall mounted gas-fired condensing boilers with outputs from 60 to 140kW. The new boiler is described as a highly flexible unit that can be specified for an extensive range of applications. Features include: a flat metal fibre cold flame burner for extremely low NOx emissions; a robust stainless steel heat exchanger with double wall geometry providing superb heat transfer; extensive cascade arrangements for powerful and flexible systems; plus the latest control functionality to ensure optimum performance.

CIRCLE READERLINK 845

HYCO

Enhanced Speedflow Range

The Speedflow range of unvented water



heaters from Hyco has recently been extended to make this the ideal choice for even more applications in kitchens, offices, shops and student accommodation or anywhere an undersink product is required to supply up to three basins. The 5, 10 and 15l compact unvented water heaters have a 2kW element as standard with a glass lined tank. Customers are now able to enjoy the same Speedflow product but with an optional upgrade to a stainless steel tank. This enhances product life and is ideal for use in hard water areas where scale build-up is often a problem. For applications with reduced load requirements, the 10 and 15l Speedflow is also available with a 1.2kW element.

CIRCLE READERLINK 848



HITACHI POWER TOOLS

UC18YSL3 battery charger

This superfast 18V battery charger can fully charge a 6.0Ah Lithium-ion battery in just 38 minutes. Said to be one of the fastest battery chargers available for power tools to date in the UK, the launch of the UC18YSL3 means that, by taking two 6.0Ah batteries on site, one for use on an 18V power tool and one being charged by the UC18YSL3 on rotation, a tradesperson will never be without cordless battery power. The UC18YSL3 charger is compatible with all Hitachi slide Li-ion batteries, including 1.5Ah (15mins), 2.0Ah (20mins), 3.0Ah (20mins), 4.0Ah (26mins), 5.0Ah (32mins) and 6.0Ah (38mins). Hitachi has also included a USB port so that the all-important mobile phone can be charged at the same time.

CIRCLE READERLINK 846



SCRUFFS

Pro Active Polo

Technically designed with hard working professionals in mind, this lightweight polo includes a moisture management system built to keep you cool and fresh. It is available in a wide variety of colours. As well as a moisture management system, the polo also features a functional security zip pocket.

CIRCLE READERLINK 849

FREE TO THE TRADE

PROFESSIONAL

HEATING & PLUMBING

THE BUSINESS MAGAZINE FOR THE HEATING & PLUMBING INDUSTRY

INSTALLER

SEPTEMBER 2016

BATHROOMS & PLUMBING

STATE OF FLUX

ROOM HEATING & UFH

WHAT'S CHANGED SINCE YOUR LAST ACS ASSESSMENT?



CONNECTED TOOLS

STAYING IN TOUCH



BATHTUB CHALLENGE II

THIS TIME IT'S PERSONAL!

VISIT PHIONLINE.CO.UK FOR REGULAR UPDATES AND EXCLUSIVE CONTENT