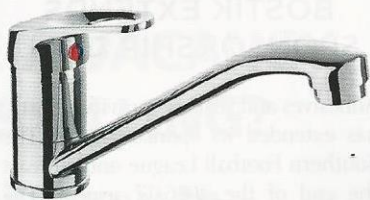


LEISURE SINKS LAUNCHES AQUAFLOW 35

Leisure Sinks has added the lightweight yet highly functional Aquaflow 35 (TAF35CM/) to its range of WRAS approved taps. Designed for single tap-hole sinks, the Aquaflow 35 allows for hot and cold water to be mixed in one simple action. Compared to similar kitchen mixer taps, this new model is considerably smaller, without impacting on functionality or durability.

Anchored to a 44mm diameter base, the Aquaflow 35 is 140mm high, with a



spout exit reach of 217mm and 117mm spout exit height. The tap is capable of operating at water pressures up to 5.5 bar and will suit any UK standard 35mm tap hole.

www.leisuresinks.co.uk

NEW DRAPER EXPERT 15KG BREAKER

Brand new to the Draper Expert range is a powerful, hardwearing and portable breaker delivering 45J of force. The new breaker has a robust metal construction, making it an effective and efficient solution for most breaking jobs. This Draper Expert Breaker is suitable for general demolition work and great for breaking old tarmac driveways, paths and heavier duty concrete slabs and footings.

A durable, heavy duty carrying case comes with the breaker for protection



and easy transportation. Several other useful accessories come with the breaker too, including a flat chisel, a pointed chisel, an oil bottle, a spare pair of carbon brushes and a spanner.

www.draperools.com

BIG WIPES KEEP YOU GRIME FREE ON-SITE

Most days can be messy days when you're out on-site but, with the Big Wipes Power Gel, tough grime can be quickly shifted so you can leave the dirt at work. Big Wipes Power Gel is an all-in-one multi-purpose skin cleaner containing special 'power scrub' granules, which means the Power Gel can remove deeply ingrained dirt and grime 100% faster than smooth gels.

Simply rub the Power Gel into your hands and let the power granules do their work, then rinse with water and dry

your hands. Just a small amount of the Power Gel can easily remove uncured paint, adhesives, silicone, epoxy, PU foam, oil, grease and more from the skin. The fresh citrus scent means hands smell good too, which is important for those tradespeople who, for instance, meet customers after handling materials.

www.bigwipes.com



NEW STORAGE SOLUTION FROM C.K MAGMA

Carl Kammerling International has introduced the new C.K Magma 3 in 1 Tote, further enhancing its range of premium storage. The new Tote folds flat when not in use, making it suitable for storage in a fully loaded van. When in use, the Tote offers safe and versatile transportation for a wide range of tools.

A deep 11" cavity teamed with 10" width and external pockets add to its versatility and convenience as a conventional tote. In line with the existing C.K Magma range, the new 3

in 1 Tote is built to withstand the rigors of building sites and industrial environments. Constructed of a durable 600-denier polyester to protect against wear and tear, this reliable Tote also features an internal wipe clean, removable base.

Tel: 01758 704704
www.ck-magma.com



COMBAT OCCUPATIONAL SKIN ISSUES

Deb has launched its new Deb Stoko range of products designed for occupational skin care across a variety of industries, including construction. The portfolio of Deb Stoko pre-work creams, hand cleansers and after-work restore creams have been formulated to minimise the risks of skin disease and stress that are common in construction environments.

Construction sites pose unique risks to workers' skin, due to the nature of the work itself and continuous exposure



to the outdoors. In the worst cases, occupational skin conditions may force employees to be absent from work, hampering a workforce's productivity and increasing project costs.

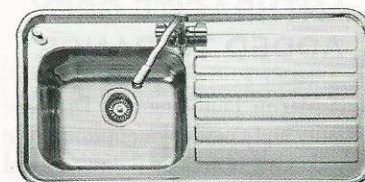
www.debgroup.com

LEISURE SINKS LAUNCHES THE LUXE

Leisure Sinks' range of Luxe sinks offers an array of designs to accompany any kitchen layout, thanks to a wide variety of bowl and drainer configurations.

There are four Luxe models available in total (LX105, LX155, LX155 double bowl and LX84), each made from 0.9 gauge, 18/10 stainless steel, boasting stunning polished finishes and a 35mm tap hole.

Each sink in the Luxe range has a waste kit included, while models are also available with an optional stainless



steel draining basket. Plus, every sink has a 10-year warranty as standard. All Leisure Sinks products are regularly tested by independent inspectors to guarantee that they are manufactured to the highest standards.

www.leisuresinks.co.uk

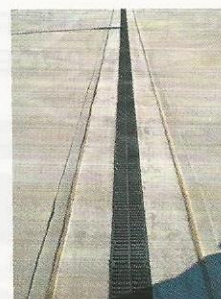
DRAINING THE LAKE DISTRICT

Filcoten grated channel drain, an innovative drainage system launched by Gatic Civil Drainage, was the product of choice for Carlisle Lake District Airport. The project marks the first major installation of Filcoten in the UK, specified by Stobart Rail and supplied by Penrith Building Supplies.

The installation of Filcoten is part of a large project to develop the airport for commercial flights to Cumbria and open up tourist opportunities for the Lake District. In total the project will

involve four kilometres of new drainage.

Filcoten is the world's first lightweight concrete channel drain. Its robust material means far fewer breakages in transit, in stock, during installation and in use.



Tel: 0808 100 2008
www.gatic.com

SMARTER MEASURING GOES THE DISTANCE

Enabling more tradesmen than ever before to work smarter with the latest measuring technology, the Stabila range of quality tools from Hyde now includes two compact laser distance measures.

The Stabila LD220 and LD250 laser distance measures feature the latest measuring technology in a compact format, taking up little more room in a pocket or tool bag than a standard tape measure. Producing quick results to ensure efficiency when measuring out



any job, the laser measure has a large display to make the results easy to read and overcomes the tricky juggling act of measuring distances or carrying out estimations when working alone.

Tel: 0121 705 7987
www.brianhyde.co.uk

To advertise your products and services in the Marketplace section, contact Emily Cox
Tel: 020 7973 4638 Email: e.cox@bgluk.com

BMN

BUILDERS' MERCHANTS NEWS

February 2016

www.bmnmag.co.uk

Simply... Trustworthy

As the UK's largest manufacturer of aircrete products you can trust we will deliver.

www.hhcelcon.co.uk 01732 886444

build with ease

H+H

SUPPLIER PROFILE

BMN speaks to Catnic to find out how it has diversified its product range for builders' merchants.

12

DIVERSITY IN THE WORKPLACE

CCF discusses the importance of diversity in the workplace to ensure a strong skill base for the future.

16

DOORS AND WINDOWS

Why more timber doors and windows are being specified by self builders and what merchants should look out for.

24

PLUMBING AND HEATING

Worcester, Bosch Group discusses how the traditional boiler presents merchants with an opportunity to make add-on sales.

39

LONDON BOILER CASHBACK SCHEME LAUNCHED

The Mayor of London, Boris Johnson, has launched a new boiler scrappage scheme, which will offer homeowners in the capital the chance to receive a £400 cashback voucher towards the cost of a replacement A-rated boiler.

As part of Mr Johnson's bid to cut household energy bills and reduce carbon emissions, the new London Boiler Cashback Scheme, which went live on 2 February, 2016, will be operated by the Energy Saving Trust (EST), and has an allocated budget of £2.6m.

Launching the scheme, Mr Johnson said: "This scorching scheme will help 6,500 London homes become more energy efficient and cut annual bills. As well as saving cash, upgrading an old boiler gives the environment a huge boost by lowering carbon emissions and making our air sweeter."

Owner-occupiers and accredited private landlords in London wishing to apply for the scheme must obtain quotes from Gas Safe-registered or MCS-certified installers, and then apply online to the EST to receive the voucher. The voucher is valid for 12 weeks from the date of issue, and payment will be made within 21 days of receiving proof that the installation has taken place.

Households are eligible if their gas, oil, LPG or solid fuel boiler has an

efficiency rating of 70% or less. Electric boilers are not eligible.

With the potential to reduce annual carbon dioxide emissions by up to 9,750 tonnes, and offering savings of up to £340 a year for those investing in a high efficiency system, Neil Schofield, head of external affairs at Worcester, Bosch Group believes this is a scheme the industry has been crying out for.

He said: "It is extremely encouraging to see that boiler scrappage is back on the agenda. Where previous industry incentives have involved too much red tape, the London Boiler Cashback Scheme does away with the complications and makes things as simple as possible for both the installer and the householder."

Tim Pollard, head of sustainability for Plumb Center, described the scheme as a welcome boost for the heating industry: "Previous scrappage schemes have proved to stimulate action and we have no doubt this initiative will do likewise," he said.

Mr Pollard continued: "A mild winter and continuing economic uncertainty has led to many homeowners stalling on plans to update their heating systems and, with the majority of boilers being manufactured in the UK, this has created an unwelcome situation throughout the supply chain. So although this is a London-centric



scheme, the benefits of the investment will be felt far beyond the M25."

Such was the success of the government's previous boiler scrappage scheme, run by the EST in 2010, Mr Schofield hopes that a positive reaction will lead to an extension of the scheme beyond the country's capital.

Paul Hardy, managing director for Baxi, agreed with Mr Schofield and believes that in order to help tackle the issue of there being more than 2.3m fuel poor homes in England, other cities across the UK should follow suit and introduce a similar scheme.

The Builders Merchants Federation (BMF) was involved in formulating the London Boiler Cashback Scheme and helped City Hall staff, along with other heating industry partners, to devise

workable arrangements and decide on eligibility and practicalities.

Brett Amphlett, BMF policy and public affairs' manager, concluded: "We welcome and support this initiative by Boris Johnson that will doubtless be forever known as 'Boris Boilers'."

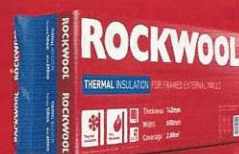
"We know from the Green Deal cashback offer and Green Deal Home Improvement Fund that most of those vouchers went towards the cost of replacing boilers. In the absence of a proper, long-term national policy, it is not surprising that residents respond to a cash incentive."

The BMF also wants to see the scheme encourage people to have advanced controls, thermostatic radiator valves and magnetic filters installed at the same time.

ROCKWOOL®

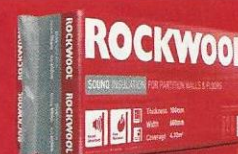
THERMAL and SOUND range

Insulation simplified - Service and support enhanced



THERMAL

Ideal for use in external walls and roofs.



SOUND

Ideal for Sound protection within both walls and floors.



CLARIFIED & SIMPLIFIED

Giving clear application focus, making product specification and selection simple.

SUPERIOR PERFORMANCE

Sound absorbent, water repellent, unmatched fire resistance and durability.

DRIVING BRANCH SALES

Including staff training, point of sale and digital marketing support.

CONTRACTOR SUPPORT

Visits to sites and branches, giving demonstrations, samples and installation support.



Call the merchant support team:

01656 862 621

See the difference...

rockwool.co.uk

