

Biocide-incorporated mat helps prevent dirt from being traipsed into buildings

## Contamination control

Available from **Jaymart**, Clean-Off is a low profile, biocide-incorporated dirt contamination control mat for clean zones. It is designed to stop dirt from being traipsed into the workplace.

special anti-microbial agent that provides long-lasting protection against the growth of organisms, including bacteria, mould and so on. Mats are non-leeching and non-toxic.

Supplied with pads of 60 numbered layers, mats are

offered in two sizes: 800 by 648mm and 915 by 1168mm, either white frame with white pads or black frame with grey pads. Replacements pads are available.

**421** Tel: 01373 864926  
[www.hsmsearch.com/enquiry](http://www.hsmsearch.com/enquiry)

## Barrier message



Can be used to warn of hazards or issue directions

**QM Group**, designer of queue management systems, has introduced a new product for the health and safety sector.

The GL25 Clear has a clear display post that can be used to exhibit tailored messages, such as potential hazards, directions, warnings and instructions.

This can be done through words or colour. For example, a red and white striped post can be used to communicate a hazard warning.

The GL25 Clear has more than 4m of retractable tape

and a rugged base for stability. It can be used indoors or out, whatever the weather.

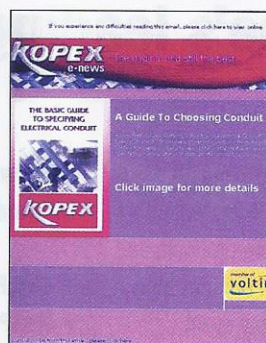
The range also includes the GL45 a barrier that has a tip resistance that is said to be 10° greater than most barriers on the market. The metal upright post that supports the queue barrier tape is available in stainless steel or powder coated finish in a variety of colours and is welded to the base to maximise operating life. A universal lock is included.

**420** Tel: 01908 511400  
[www.hsmsearch.com/enquiry](http://www.hsmsearch.com/enquiry)

## FEATURES NEWS ON ELECTRICAL CONDUIT

New from **Kopex International** is *e-zine Kopex News*. It is designed to provide the latest information on products and application of conduit systems available through the company's Accredited Specialist Stockist network.

It will also bring specifiers, users and installers up-to-date with industry legislation and



Keep up-to-date with legislation

**422** Tel: 01628 894374  
[www.hsmsearch.com/enquiry](http://www.hsmsearch.com/enquiry)

standards and how these may affect the use of electrical conduit.

**Kopex e-news** can be accessed through the company's website – [www.kopex.co.uk](http://www.kopex.co.uk) – where users can register to receive the communication regularly.

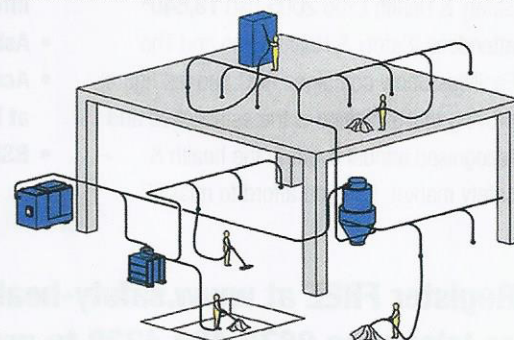
The company's rigorous quality standards and development programme are designed to ensure reliability and to provide cost effective solutions.

**423** Tel: 0800 652 9571  
[www.hsmsearch.com/enquiry](http://www.hsmsearch.com/enquiry)

## Centralised solutions

Heavy duty industrial vacuum cleaners have become an essential piece of equipment in most manufacturing and warehouse buildings in recent years. Their use has led to improved standards of health and safety, as well as more accurately produced and less contaminated products.

**Freddy Products** offers a range of portable, heavy duty vacuums, such as its



Central vacuum system

Powervac stainless steel machine.

A problem occurs in many factories and warehouses when different parts of the facility need to be cleaned simultaneously. To meet this

requirement, **Freddy** can provide a central vacuum system that can be used simultaneously by multiple operators.

**424** Tel: 01386 561113  
[www.hsmsearch.com/enquiry](http://www.hsmsearch.com/enquiry)

## WIPES FOR HANDS, TOOLS AND SURFACES

Two new ranges of anti-bacterial, heavy duty industrial wipes have been introduced by **Sycamore UK**.

Both versions are said to remove oil and water based paints, instant grab adhesives, silicone and acrylic sealants, PU foam, oil, tar, grease, permanent marker and general grime from hands, tools and surfaces.

The company says **Big Industrial** wipes have been laboratory proven to kill 99.68% of *Listeria*, *staphylococcus*, *E. coli* and *Salmonella* bacteria within 30sec.

The strong 200 by 300mm throw-away wipes are impregnated with a blend of safely diluted cleaning solvents and emulsifiers.

**Industrial+ Big** wipes are soft and absorbent, yet have



**Anti-bacterial wipes** a gently abrasive underside that makes them effective at removing stubborn stains.

# HSM

HEALTH & SAFETY MATTERS



*Are you ready?*



**3M can help with the new noise regulations**

For more information see pages 16-17