

FREE TO THE TRADE

# Professional BUILDER

BUILDING ■ FLOORING ■ PLUMBING ■ ROOFING  
■ CARPENTRY ■ PAINTING AND DECORATING ■

THE BUSINESS MAGAZINE FOR THE BUILDING INDUSTRY

SEPTEMBER 2012

**GOING GREEN**  
Deal or no deal?

**MASONRY &  
AGGREGATES**  
Up the garden paths!

*Silence is golden with the new BF850 SilentMAX diamond blade from Marcris  
which combines noise reduction with cutting edge performance*

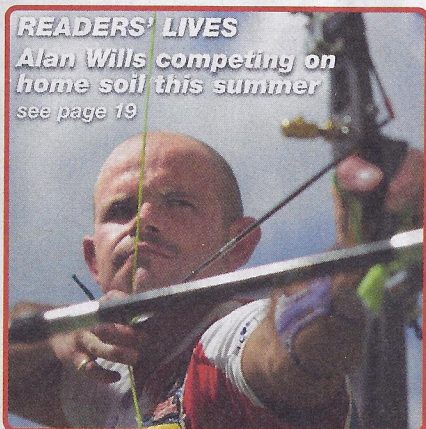


# contents

SEPTEMBER 2012 VOL. 34 NO. 8



Total Average Net Distribution 119,429  
1 January 2011 - 31 December 2011



**READERS' LIVES**  
Alan Wills competing on home soil this summer  
see page 19

## REGULARS

- 9 Viewpoint
- 11 News
- 16 Dear Professional Builder...
- 19 Readers' lives
- 36 Free For All!
- 39 FMB
- 45 Health & Safety Products
- 46 Business Solutions
- 120 Klobber - Up on the roof
- 122 BEKO - Cool runnings
- 122 FAKRO Q&As
- 123 Dunlop's Agony Aunt **NEW!**
- 125 The Way We Were
- 126 Tea Break Teasers
- 127 Wise Howell
- 127 Irwin Crossword

## SPECIAL REPORTS

- 14 Traders of a lost art!
- 23 A jury of your peers
- 26 Pillars of the community
- 29 A change for the wood!
- 32 Done in a flash
- 34 The "Ball's" in your court
- 40 The jig idea



see page 26

## MASONRY, AGGREGATES AND ANCILLARIES

- 51 Show of strength
- 55 Running with the pack!
- 58 Place your Brett
- 60 On the staff
- 62 Meet the Flintstones
- 64 Resins to be cheerful
- 65 The jig idea
- 67 The key to success
- 71 H+H Builder's Brunch
- 72 Ground force
- 75 NEW PRODUCTS

See page 109

PROFESSIONAL BUILDER

# TOOLFAIR 2012

POWER TOOLS • HAND TOOLS • BUILDING EQUIPMENT

You can now follow Professional Builder on:  
@PB\_mag

www.youtube.com/probuildermag

## GREEN BUILDING

- 76 A good deal from the Green Deal
- 79 Let us be your guide
- 82 Decision of the board
- 85 Small is beautiful
- 87 The camera never lies
- 90 Cometh the shower
- 92 Diamonds are forever
- 94 Renewables Roadshow 2012
- 96 GREEN PRODUCTS

## TOOLS & EQUIPMENT

- 105 All power to you
- 106 Mighty Mlni
- 113 Universal approval
- 116 Let us spray

## PRODUCTS

- 99 OFF THE WALL
- 101 GENERAL BUILDING
- 102 TOOLS & EQUIPMENT

## FREE FOR ALL!



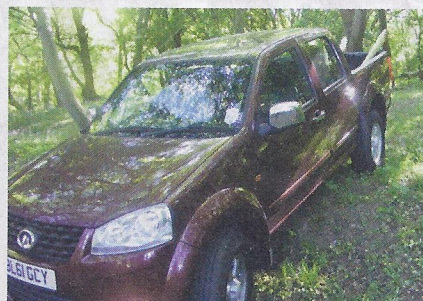
Win thousands of pounds worth of free stuff with Professional Builder's Free-for-All!

# 36

Big Wipes are giving away five amazing VIP crates! Worth a £110 each!



**BIG WIPES COMPETITION**  
see page 43



## VEHICLES

- 118 Another brick in the Great Wall!



# HANDLE WITH CARE!

Your most valuable tools are your hands so keep Big Wipes in your tool box to combat contact dermatitis

Sore, cracked and dry hands can be regarded as just part of the job for builders who get caked in all sorts from cement to PU foam, and whose hands can be in and out of water all day long. Working environments are not always bacteria-free and more often than not you don't have running water to wash your hands.

But with around 40,000 new cases of work-related contact dermatitis reported annually, exposure takes its toll and can leave sufferers in crippling pain – and millions of pounds being lost each year in sick days and lost contracts.

**Skin disease**  
GPs reported around 136 new cases of occupational skin disease per 100,000 workers between 2008 and 2010.

Although cases have fallen between 1996 and 2010, it is still a serious issue for employees and employers with between 96,000 and 367,000 working days lost due to skin disease in 2001/2.

The irritation of the skin caused by a foreign substance



causes inflammation, blisters, rashes or burning skin and can easily be prevented or solved by simply keeping it clean.

Nigel Dibbo, Managing Director of Big Wipes said: "Builders have their hands in and out of all sorts all day – and the nature of building sites often means there isn't even any running water in which to attempt to get some of the gunge off. That's why Big Wipes are an ideal addition to a tool box for every tradesman on the move. They are quick and easy to use with no mess, no fuss – and they work on pretty much everything."

## It could be PU

The company promises that the product will cut through everything from stubborn PU expanding foams and adhesives to silicone sealants and epoxy grouts. Their formula means you can clean-up wherever you are and wipe away the risk of damaging your hands permanently.

And the fact they can be thrown in the bin as soon as they have been used reduces the chance of contamination, which can be caused by wiping your hands on towels, rags or down your trousers.

So, as well as being a health and safety must, the range is suitable not only for skin, but work areas and tools too.

## Work-related Contact Dermatitis – The Facts

- **What is it?** Inflammation of the skin after contact with a substance.
- **How can I get it?** If your skin is in contact with harsh and abrasive substances or solvents, the top layer of protective skin can be removed, as well as the skin's natural oils.
- **What are the symptoms?** Dry, red and itchy skin are usually the first symptoms but this can deteriorate into a debilitating and painful condition if not treated and prevented. Blisters, swelling, flaking and cracking of the skin could come next.
- **What can I do to prevent it?** Employers have a duty of care to provide gloves or barrier cream but where this is inappropriate, clean your hands regularly with a dermatologically tested wipe such as Big Wipes.

For more information on work-related dermatitis and Health and Safety legislation, visit



[www.hse.gov.uk/skin](http://www.hse.gov.uk/skin)

Your chance to win over page...



**The right wipe for the job**



Big Wipes, offers a number of grime-ridding products which provide cleaning which contain a fully biodegradable cleaning formula that complies with all the latest EU Cosmetics Standards they are also dermatologically tested, anti-bacterial and contains skin conditioners Aloe Vera and Vitamin E.

**The range includes –**

- **Big Wipes Industrial** – With a new patented power fabric.
- **Big Wipes Industrial Plus+** – The same industrial-strength cleaning formula as Big Wipes Industrial but with a high performance dual-sided fabric – for that really tough stuff! A scrub face delivering 100% faster grime removal than smooth fabrics alone, combined with a smooth face to soak up the muck.
- **Big Wipes Industrial Green** – Offer the same all-purpose cleaning power as other Big Wipes but are 100% bio-degradable. Great for ridding non-hazardous substances as they can be chucked straight into the recycling bin.

**Your Chance to Win!**

Professional Builder has teamed up with Big Wipes to give you the chance of experiencing for yourself their amazing no mess, no fuss, powerful gunge removal for free!

We are giving away five amazing VIP crates full off the stuff! If you are a lucky winner of a £110 pack you can chuck them in your bag or keep them on the move in the van to make sure wherever you are you can have a no hassle scrub up.

To win a crate full of Big Wipes stuff, finish the phrase below –

**'Big Wipes...one wipe shifts...'**

- a) ...A bit
- b) ...The lot!
- c) ...Some

Circle readerlink 165

Circle readerlink 166

Circle readerlink 167

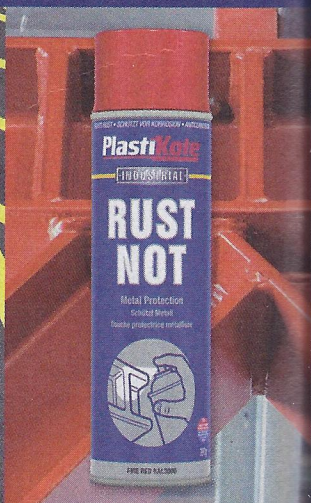


For further information on Big Wipes use the reader enquiry number 168

If you want to see the video footage of Big Wipes in action visit our website at <http://probuildermag.co.uk/videos/big-wipes-industrial>

**A SPRAY PAINT FOR EVERY JOB**

PlastiKote's industrial spray paint products are convenient, effective and manufactured to high technical specifications to always give a perfect finish.



**PlastiKote®**

**INDUSTRIAL**

Readerlink enquiry 038

For more information ask at your trade counter or builders merchant, call us on 01223 836400 or visit [www.plastikote.com](http://www.plastikote.com)



# OFF THE WALL



## SPRAYING UNIT

A huge number of different materials, such as emulsions and smooth masonry paints, primers, anti-corrosion protection, bitumen, flame protection, roof coatings and airless sprayable fillers, can be applied with the ProSpray 3.39 from **Wagner**. The lightweight and compact ProSpray 3.39 piston pump weighs just 44 kilograms. The pump features a floor-mounted inlet valve to increase the intake rating for higher viscosity materials. The extremely hard ceramic inlet valve ball reduces wear, thereby extending service life.

Circle readerlink 205



## SOFTWARE PACKAGE

**EstimatorRoof** is a roofing estimation software package that simplifies the task of roofing estimation. The process is simple: measure the roof, enter the dimensions, and select the parts from the parts database. An experienced user should be able to produce an estimate in minutes rather than hours and full parts list and labour breakdown is generated with fully adjustable labour rates.

Circle readerlink 206



Circle readerlink 207

## TOP FLEET

**Top Fleet** has enhanced Van Guard's roof racks for the Kangoo Maxi and Ford Connect by attaching a glass frail bolted through the T-slot. As a result, vans with a smaller cargo area now have the versatility to transport larger frames and units. The additional element is a 1,600mm x 1,850mm external frail, complete with front and rear marker boards. The highest grade aluminium extrusion gives excellent weight saving properties, so it's gentle on fuel economy too.

Circle readerlink 208



## MODULAR HOMES

"A new line of affordable, exportable, and sustainable modular homes" is how **Connect:Homes** describes its patent-pending modular system. 90% complete at the manufacturer's factory, they are designed to be transported like shipping containers via truck, rail, or sea, making them available literally anywhere in the world, including in the UK.

Circle readerlink 209



## ARTIFICIAL GRASS

"The most realistic artificial grass currently on sale in the UK" is how manufacturer, **Grono**, describes its product. It is maintenance free, durable and is suitable for pets, kids and even as a lawn for playing sports on. There are four types of Grono lawn, the

Premier 30mm, Premier 40mm, Premier 50mm and Luxury 50mm.

The company also claims that you will not be able to see the seams where the grass has been stitched together as the layers can be joined without those visible seams.

Circle readerlink 210



## AIR-TIGHT ACCESS PANELS

**Timloc** has launched a new range of air tight plastic access panels which exceed the air tightness requirements of Part L of the Building Regulations and meet the latest Gas Safe guidelines for flue inspection hatches. The new panels have an integrated low profile seal design making them completely air tight.

Circle readerlink 211



## PAYMENT SYSTEM

The **Tradetill** app has been developed to turn an existing phone into a mobile card payment system. Simply request a payment through the app on site, and be paid before you leave the job. When you return to the office,

your paid invoice is sitting in your email inbox to slip straight in your accounts. According to the developers of the system it has been designed to work as easily and simply as possible for the tradesman and, importantly, no one is tied in to any contracts – if you don't like the system, you don't have to pay.

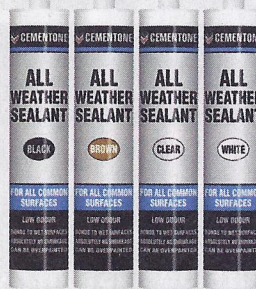
Circle readerlink 212

## ALL WEATHER SOLVENT FREE SEALANTS

Weatherproofing specialist **Cemetone** has introduced a range of solvent free all weather sealants – offering performance with the safety benefits of a MS formula. The range which will replace existing sister product **Evo-Stik**

All Weather Sealant provides a number of other key benefits including improved adhesion, zero shrinkage and low odour. Suitable for all common surfaces, Cemetone All Weather Sealant is highly flexible, over paintable and available in white, brown, clear and black. The move to non-solvent MS technology is part of a company commitment to safer products.

Circle readerlink 213



Use the FREE Readerlink service for the latest product information and prices!