

# PLUMB PARTS

THE OFFICIAL CUSTOMER MAGAZINE FROM



ENERGY BILL

SCHOOLS COULD SAVE **£44m**

CO<sub>2</sub>

625,000<sup>2</sup> tonnes

TURN OFF AND SAVE **10%**

RAINWATER HARVESTING REDUCE WATER BILLS BY **85%**

SAVE **10%** with a regular service

## SUMMER SCHOOL

Why now is the right time to target schools and colleges

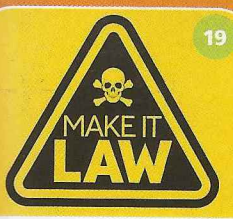
**58%** ENERGY IS USED ON SPACE HEATING

REFIT AND UPGRADE WORN-OUT FACILITIES

IMPLEMENT WATER-SAVING MEASURES

EXPLORE RENEWABLE ENERGY OPTIONS

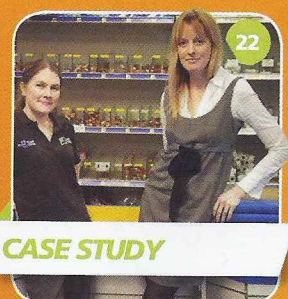
**18°C** in CLASS ROOM



19

Huge backing for Plumb Center's push to make CO alarms compulsory

CO CAMPAIGN



22

CASE STUDY

Rochester firm Heat & Home is taking advantage of a growing demand for renewable heat



46

INDUSTRY INTERVIEW

Julie Spinks, managing director of the Water Regulations Advisory Scheme

## PRODUCT UPDATE

### Big Wipes goes 4x4: the best just got even better

When you consider that, as a plumber, heating or gas engineer, your hands are your most important tools, getting them clean and looking after them is crucial. In practice, however, that can be difficult out on site, especially when you've shut off the water supply. Even when it is available, tradesmen know that most muck doesn't simply come off with soap and water.

Big Wipes has launched its all-new 4x4 range of industrial-strength wipes, containing four powerful cleaning agents and four dermatologically tested skin conditioners, making them even tougher on grime and even kinder to your hands.

The 'one-wipe-and-it's-gone' biodegradable formula ensures the removal of sealants, silicones, PU foam, paint and varnishes, adhesives, oil and general grime from hands, tools and surfaces. Not only that, 4x4s are preservative free and contain four skin conditioners – also



PRODUCT CODES: 514525-7

vera, lanolin, vitamin E and glycerine – which all help to nourish and protect the skin.

Packaged in easy-grip, big-capacity, trade-tough tubs with a quick-seal lid, the range also offers a massive >99.9% anti-bacterial protection. Furthermore, Big Wipes 4x4 products have been assessed to the latest EU Regulation 1223/2009 for cosmetic products, with zero levels of irritation recorded during controlled testing by dermatologists.

Not only has the formula been upgraded, the bigger, thicker and tougher fabrics have been, too:

**Red Top: Heavy Duty** The scrub-and-clean fabric now features additional 'wetting agents' to ensure even distribution of liquid



across the fabric. Textured and dual-sided, the scrub face removes even the most stubborn grime, while the smooth face absorbs any excess.

#### Black Top: Multi-Purpose

Featuring a new yellow power fabric developed over two years, Multi-Purpose is a leading combination of toughness and absorbency.

**Green Top: Multi-Surface** – this super-absorbent biodegradable wipe is ideally suited for applications involving the removal of non-hazardous substances; they can be disposed of in the normal waste or composted with 'green' waste.

- Four powerful cleaning agents AND four skin conditioners
- Bigger, thicker and tougher fabrics
- Biodegradable, water-based formula
- Dermatologically tested and assessed to the latest EU Regulation 1223/2009 for cosmetic products

### Rothenberger: holding the torch for quality

Rothenberger is a leading designer, manufacturer and supplier of quality pipe tools and machinery worldwide.

Mention the name to any tradesman and it won't be long before the conversation gets round to one of its signature products: the Super Fire 2 brazing torch.

The Super Fire 2 is fast and effective for all soldering and brazing applications up to 28mm, and can be operated with either disposable propane or MAP/pro gas cylinders, the latter delivering a concentrated



high heat to an impressive 2,000°C. Fitted with its own regulator, the flame can be precisely adjusted to give maximum control via the powerful turbine burn tip and it will not flare – even when used upside down!

Instant piezo ignition lights the torch with a squeeze of the trigger, a locking button is also fitted for continual use, and the trigger can also be locked to prevent accidental ignition during transportation.

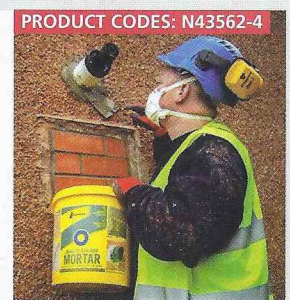
### Lafarge Tarmac – a bucketful of benefits

Lafarge Tarmac offers a choice of versatile, handy-sized, ready-to-use mortar and a multi-purpose concrete product that just requires clean water.

The rapid-setting cement is ideal for patching, concreting and quick repairs. Mix in the tub or take out what you need and reseal what's left for later on – ideal for plumbing, electrical or small maintenance jobs.

Whatever you are doing, you won't make a mess because you can keep your van spic and span as well as the area you're working in. Job's a good 'un, as they say!

- Versatile, handy-sized tubs
- Mix in the tub OR take out what you need and reseal
- No mess, no waste.
- Easy-to-store in the back of your van



# BIG WIPES

**TOUGH ON GRIME**  
BIG WIPES TO THE RESCUE!

## HEAVY-DUTY TEXTURED, SCRUB & CLEAN WIPES

Dual-sided for the toughest jobs, when you really need to cut through the dirt.

### REMOVES

- ✓ PAINT
- ✓ ADHESIVE
- ✓ PU FOAM
- ✓ SILICONE
- ✓ GAP FILL
- ✓ OIL
- ✓ GRIME
- ✓ AND MORE...

FROM HANDS,  
TOOLS &  
SURFACES



Product Code 514526

**NEW**  
**4X4**  
FORMULA

**BIGGER, THICKER  
TOUGHER!**

- 4X POWER CLEANSERS
- 4X SKIN CONDITIONERS
- KIND TO YOUR HANDS
- ANTI-BACTERIAL



**BIG WIPES.COM**